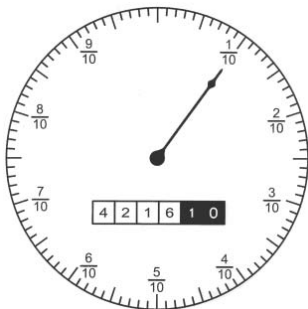




USE YOUR METER TO DETECT LEAKS

Every house in the District has a water meter. Your meter is located in a small concrete vault near the street. This device measures the amount of water you use at your home and you can use it to check for a leak in your water system. On the face of the meter is a sweep hand that measures one cubic foot, or 7.5 gallons, for each full rotation.



To check if you have a leak, turn everything off, including all faucets and sprinkler valves, so that no water is being used anywhere inside or outside the house. Check the meter, wait 15 minutes, and then check the meter again. If the sweep hand hasn't moved and the reading is the same, congratulations! You have a water-tight home and irrigation system.

However, if the sweep hand has moved or the reading has changed, you may have a leak. Start checking hose connections, faucets, toilets, and sprinkler valves for leaks. Leaks waste water and increase your water bill. In your own interest, and to conserve water, all leaks should be repaired as soon as possible.

If you need assistance to determine if you have a leak, please contact the District's Consumer Service Department at (909) 595-7554.

Please visit us at www.wwd.com

